



WORLD
RESOURCES
INSTITUTE

MAPPING MADE EASY

Online Applications for Sustainable Palm Oil

Roundtable on Sustainable Palm Oil RT10, Singapore, October 30, 2012

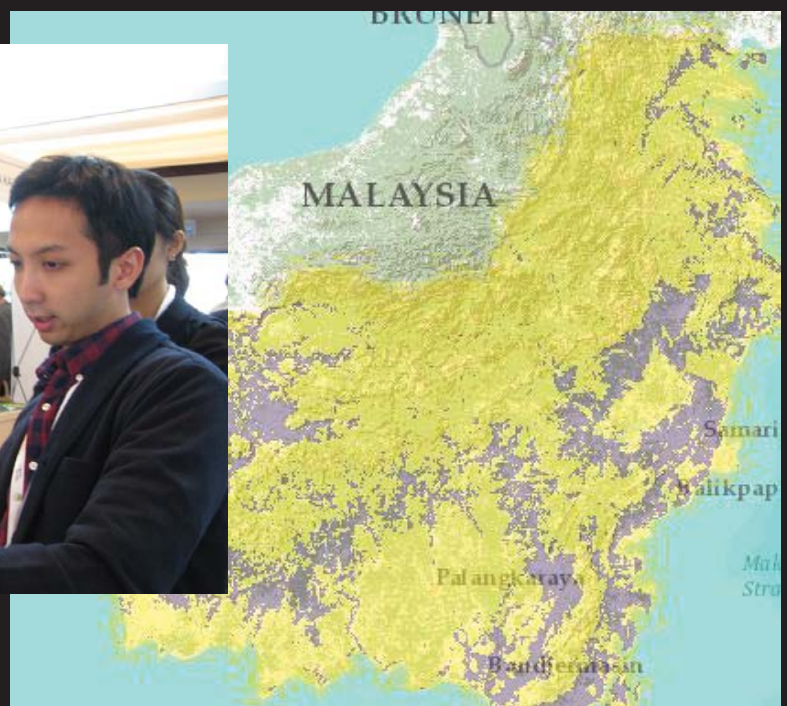
Beth Gingold

How can we support sustainable palm oil production that maintains high conservation values in Indonesia?

What if we provide RSPO members with EASY ANSWERS to COMMON QUESTIONS ?



Where are potentially suitable areas for oil palm expansion – e.g. likely to contain low carbon stocks/biodiversity ?



How can we use transparent, objective data on forest cover to strengthen financial incentives for maintaining high conservation values?



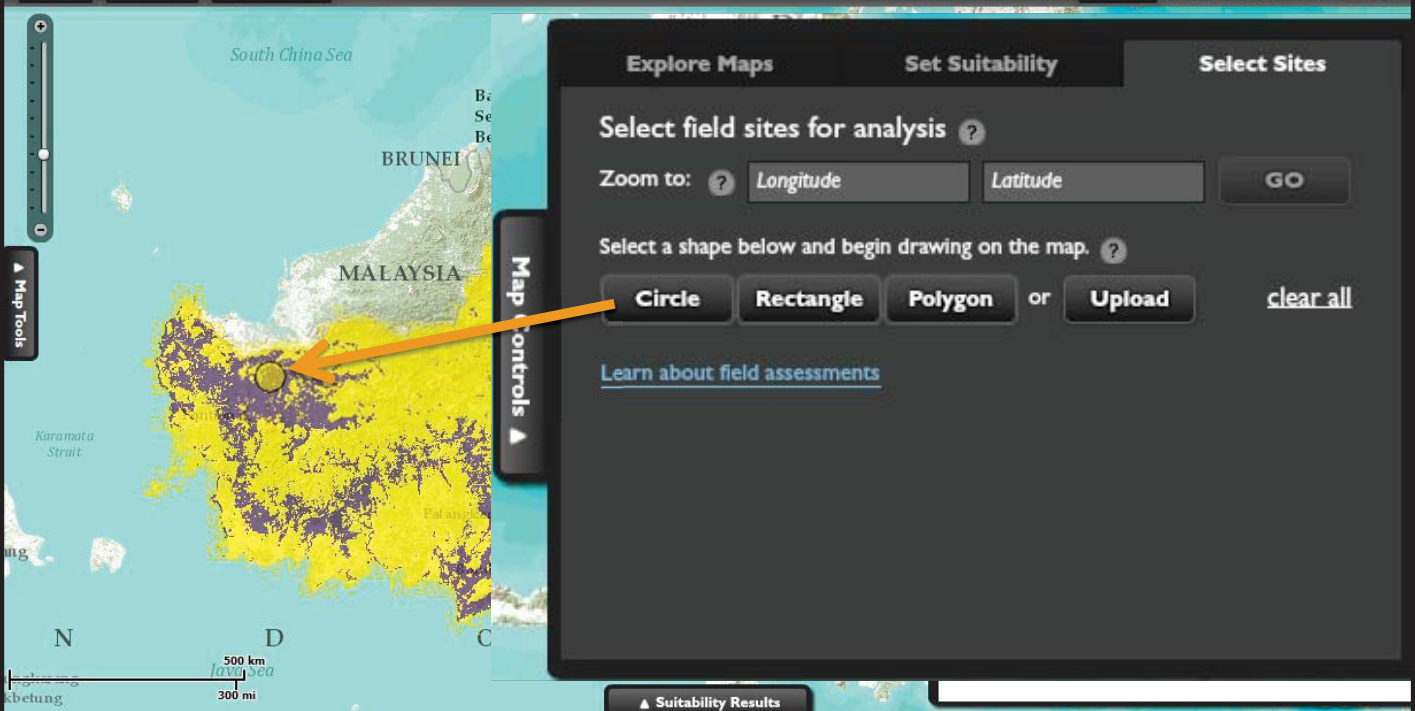
How can we use and improve the Suitability Mapper and Forest Cover Analyzer to support sustainable palm oil production?

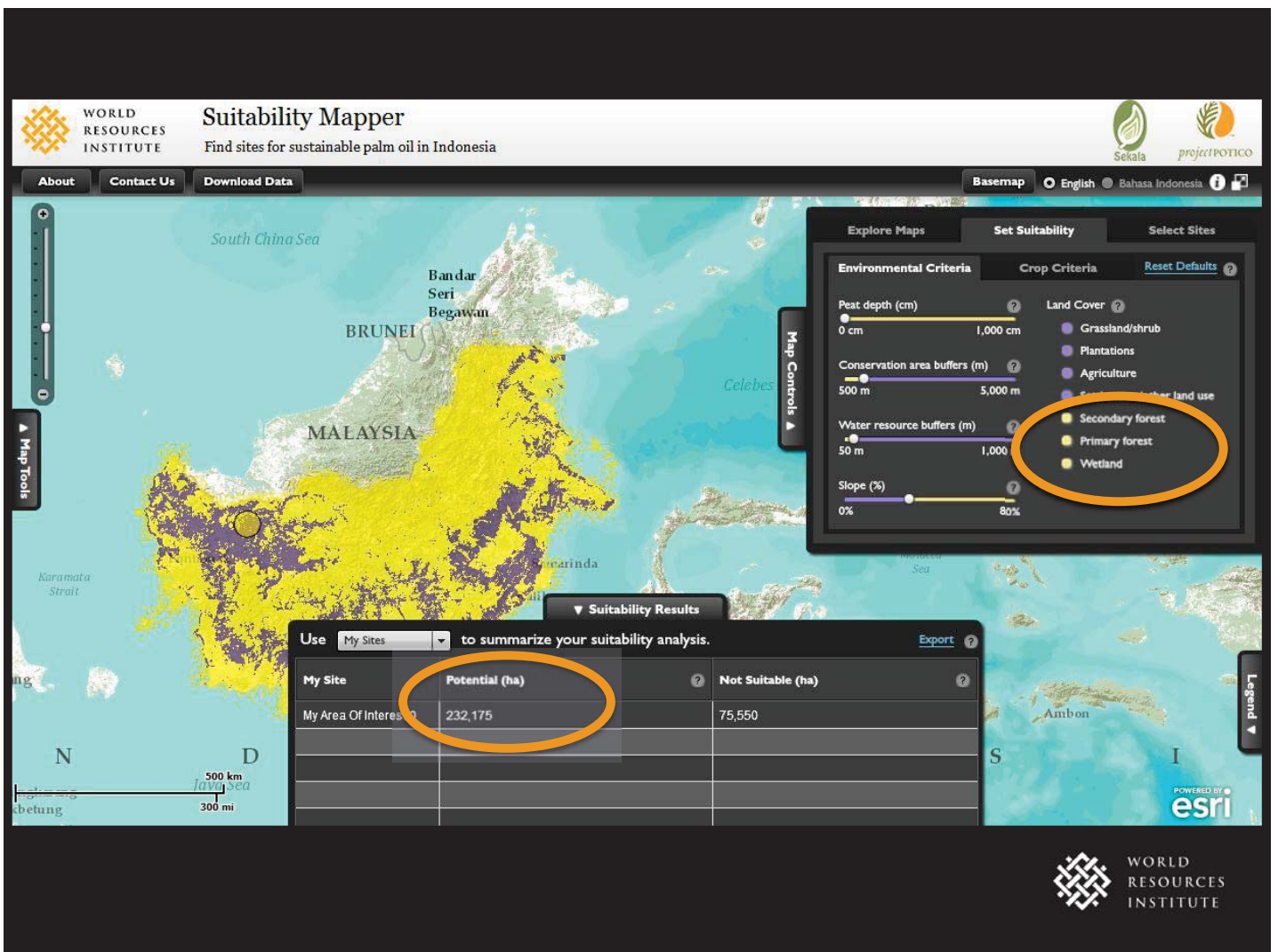
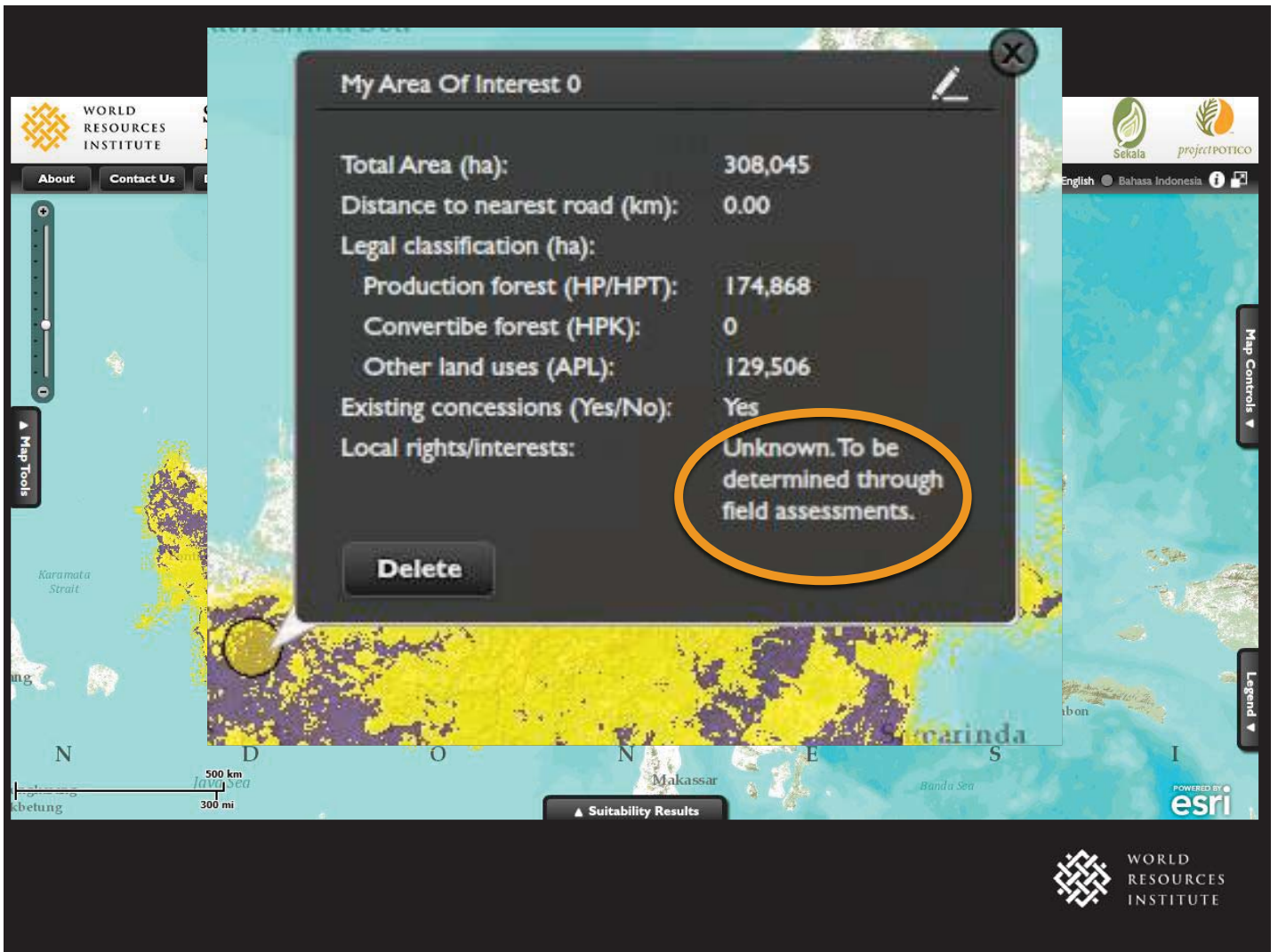


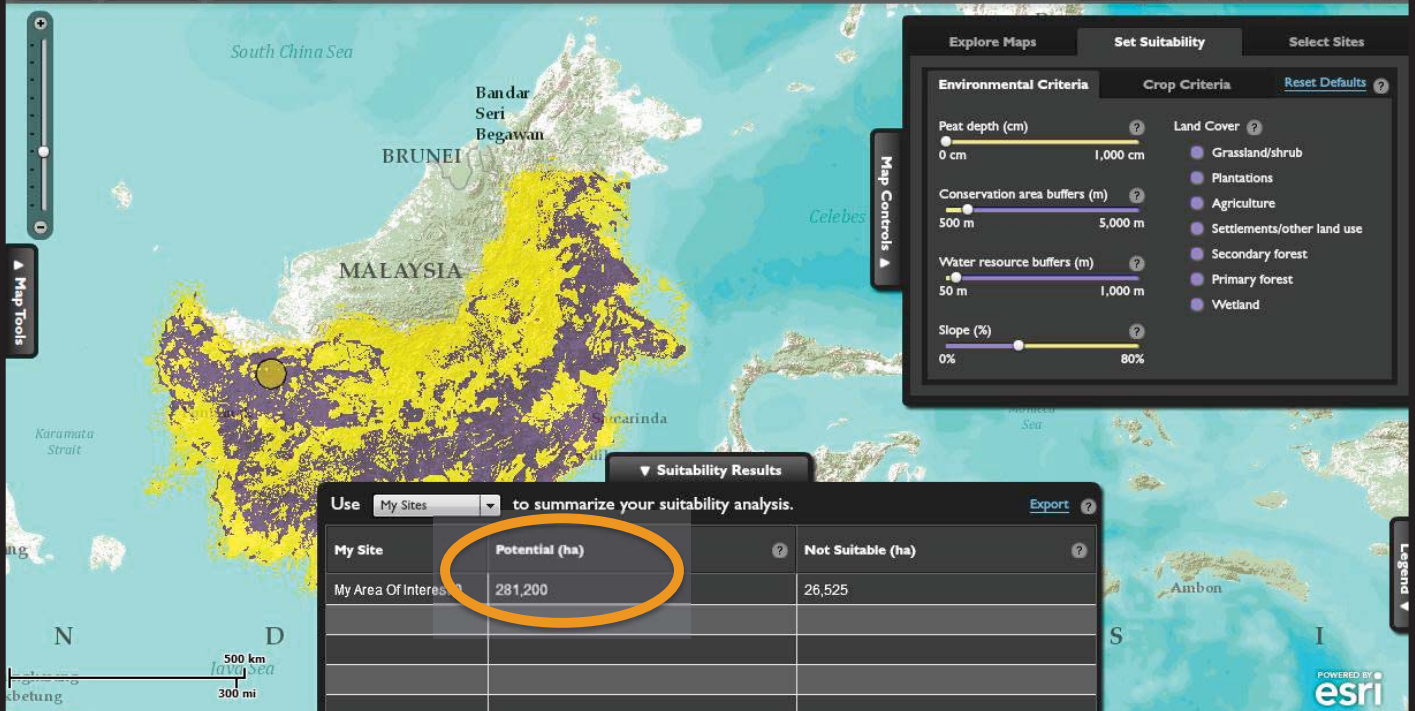
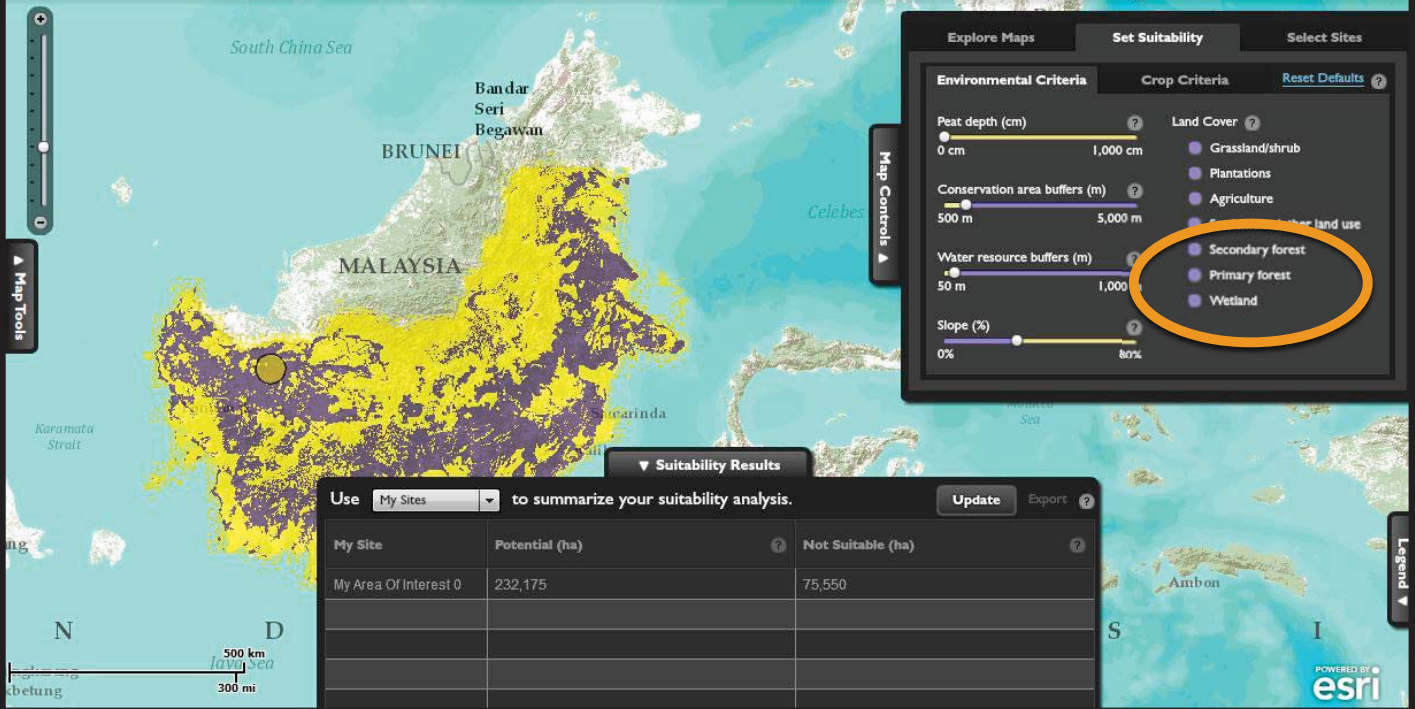
Legend **Source(s)**

Potential Suitability

- Potential
- Not Suitable







Forest Cover Analyzer

WORLD RESOURCES INSTITUTE



About Contact Us Download Data

Basemap English Bahasa Indonesia



Legend Source(s)

Annual tree cover loss

2001	2006
2002	2007
2003	2008
2004	2009
2005	2010



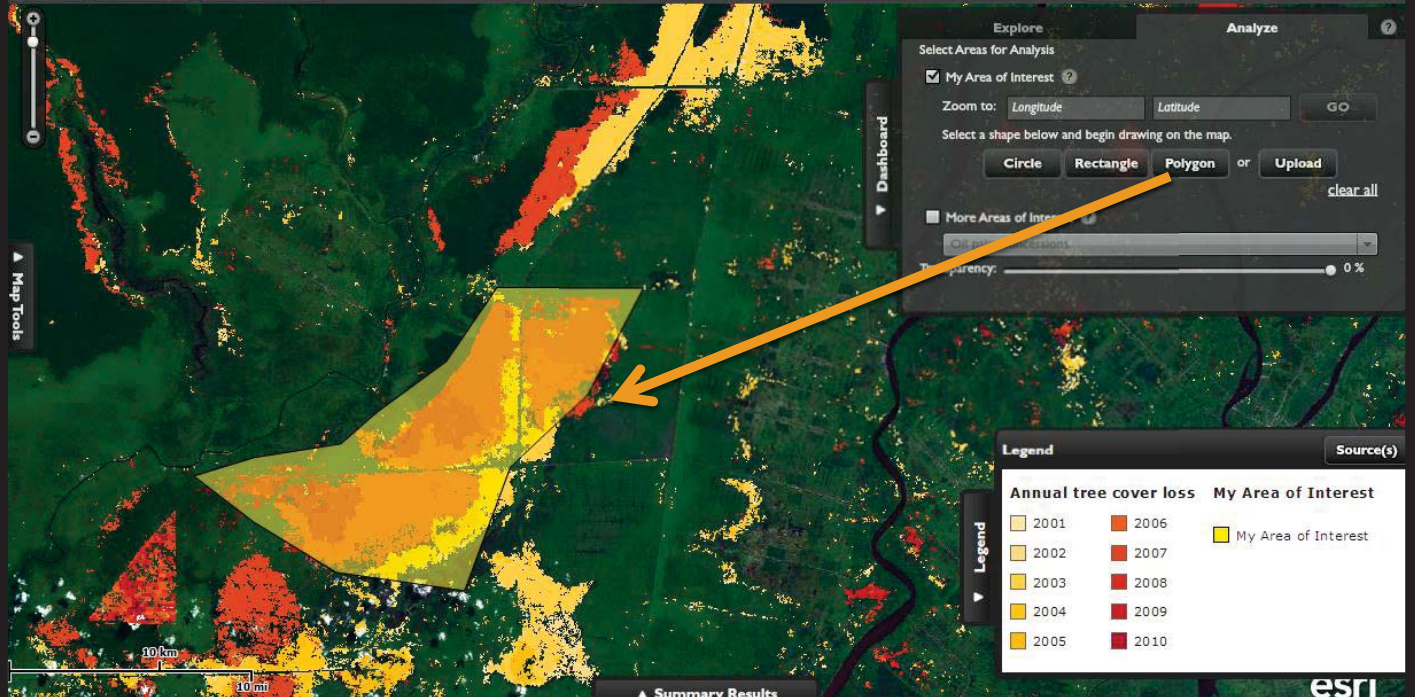
Forest Cover Analyzer

WORLD RESOURCES INSTITUTE



About Contact Us Download Data

Basemap English Bahasa Indonesia



Explore Analyze

Select Areas for Analysis

My Area of Interest

Zoom to: Longitude Latitude GO

Select a shape below and begin drawing on the map.

Circle Rectangle Polygon or Upload clear all

More Areas of Interest

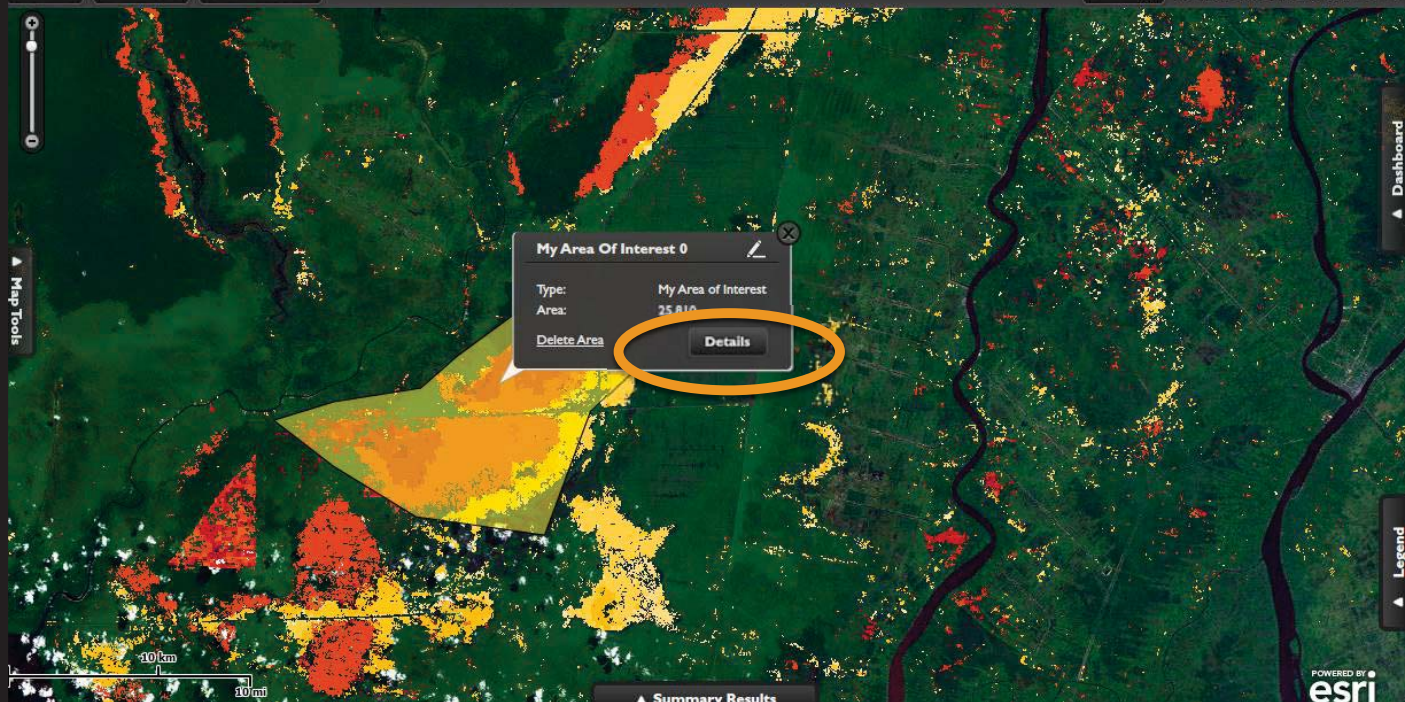
City Projections

Transparency: 0%

Legend Source(s)

Annual tree cover loss		My Area of Interest
2001	2006	My Area of Interest
2002	2007	
2003	2008	
2004	2009	
2005	2010	





Summary Results

POWERED BY esri

Over 14,000 hectares of forest loss between 2005 and 2010

Change Forest Cover Legal

Export

Tree Cover Loss (ha)

Years	Primary Forest Loss	Other Forest Loss	Total Loss
2001-2005	3,275	175	3,450
2006-2007	6,175	675	6,850
2008-2010	6,775	1,275	8,050

Source: South Dakota State University, 2011

Change Alerts (#)

Years	Number of Alerts
2011-2012	Coming Soon

Source: World Resources Institute, 2013

Over 25,000 hectares likely to contain high carbon, biodiversity values

My Area Of Interest 0

Change

Forest Cover

Legal

Export

Forest Cover	Area (ha)
Primary Forest	2,025
Other Forest	2,650
Wetland	425

Source: Sarvision, 2011: Land Cover 2010

Peat	Area (ha)
Peatland	25,150

Source: Wetlands International, 2004

100% area not legally classified to allow for palm oil production

Change

Forest Cover

Legal

Export

Legal Classification	Area (ha)
Conservation Forest (KSA-KPA)	3,250
Protection Forest (HL)	5,650
Limited Production Forest (HPT)	0
Production Forest (HP)	16,625
Convertible Production Forest (HPK)	0
Other Land Use (APL)	0

Source: Ministry of Forestry, year unknown

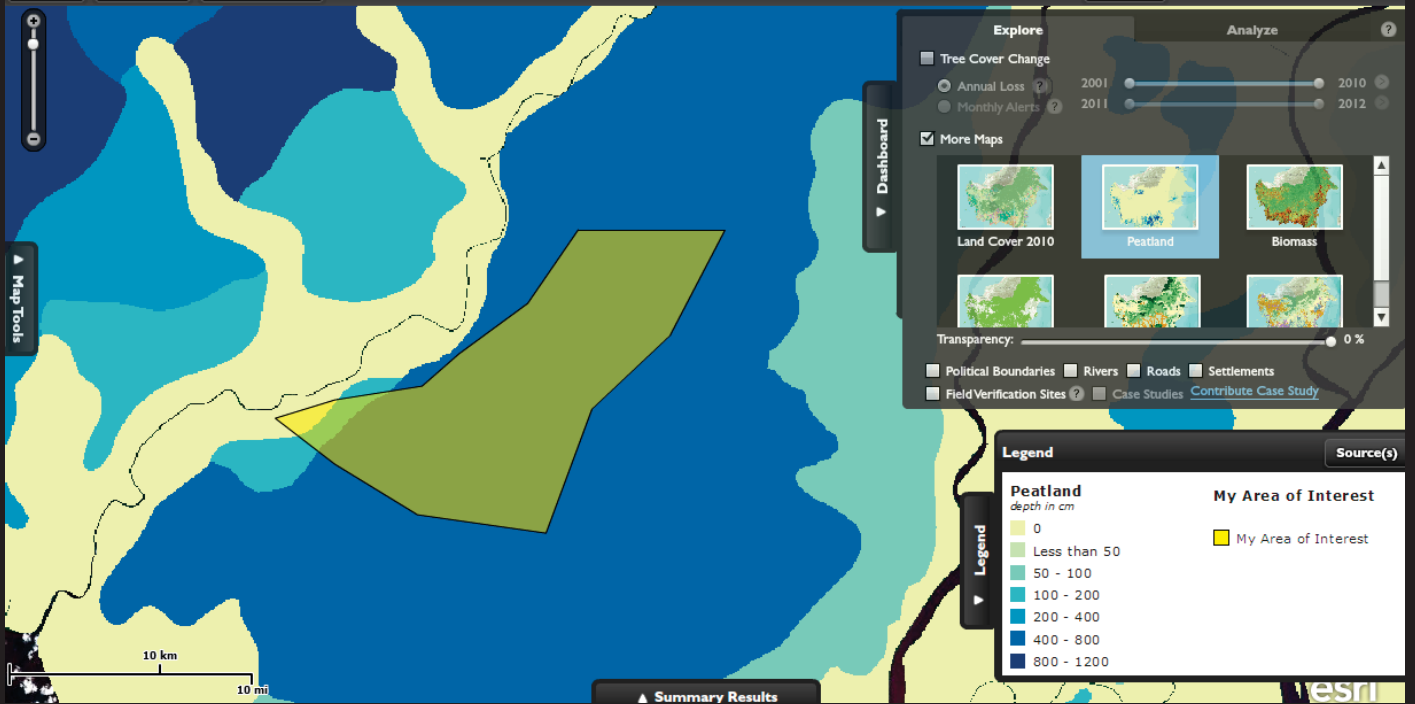
Forest Cover Analyzer

WORLD RESOURCES INSTITUTE



About Contact Us Download Data

Basemap English Bahasa Indonesia



Explore

Tree Cover Change

Annual Loss ? 2001 2010

Monthly Alerts ? 2011 2012

More Maps

Land Cover 2010 Peatland Biomass

Transparency: 0%

Political Boundaries Rivers Roads Settlements

Field Verification Sites ? Case Studies [Contribute Case Study](#)

Legend

Peatland
depth in cm

- 0
- Less than 50
- 50 - 100
- 100 - 200
- 200 - 400
- 400 - 800
- 800 - 1200

My Area of Interest

- My Area of Interest



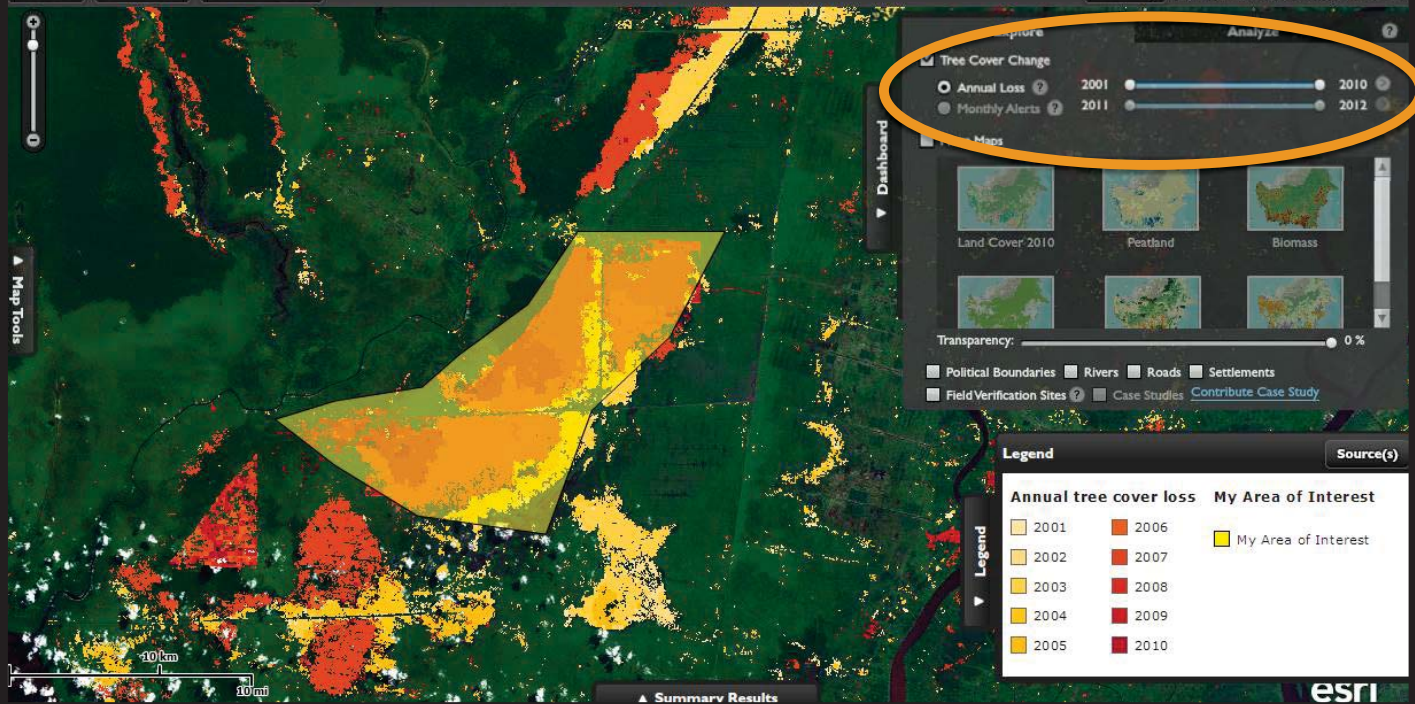
Forest Cover Analyzer

WORLD RESOURCES INSTITUTE



About Contact Us Download Data

Basemap English Bahasa Indonesia



Explore

Tree Cover Change

Annual Loss ? 2001 2010

Monthly Alerts ? 2011 2012

Maps

Land Cover 2010 Peatland Biomass

Transparency: 0%

Political Boundaries Rivers Roads Settlements

Field Verification Sites ? Case Studies [Contribute Case Study](#)

Legend

Annual tree cover loss

- 2001
- 2002
- 2003
- 2004
- 2005
- 2006
- 2007
- 2008
- 2009
- 2010

My Area of Interest

- My Area of Interest



What next?

- Next 3-6 months: Trainings and outreach; government workshops; collect feedback; add alerts; collect case studies
- Long term: Customize according to feedback; Expand geography and crops
- **We welcome your ideas!**



Contact Us



Beth.Gingold@wri.org
Research Lead, D.C.



Fred.Stolle@wri.org
Senior Manager, D.C.



Andika.Putraditama@wri.org
Jakarta Outreach Officer



Ariana.Alisjahbana@wri.org
Researcher/Coordinator, D.C.



Anne.Rosenbarger@wri.org
POTICO Fellow, Bali



Links

<http://www.wri.org/project/potico/about-suitability-mapper>

<http://www.wri.org/project/potico/about-forest-cover-analyzer>



Suitability Mapper

Find sites for sustainable palm oil in Indonesia



About

Contact Us

Download Data

Basemap

English

Bahasa Indonesia



Possible Uses: Suitability Mapper

- Producers: identify high priority sites; discuss implications of different policy options (e.g. with NGOs, government officials)
- Government officials: discuss possible policy options for use of “degraded land”
- Your ideas ?



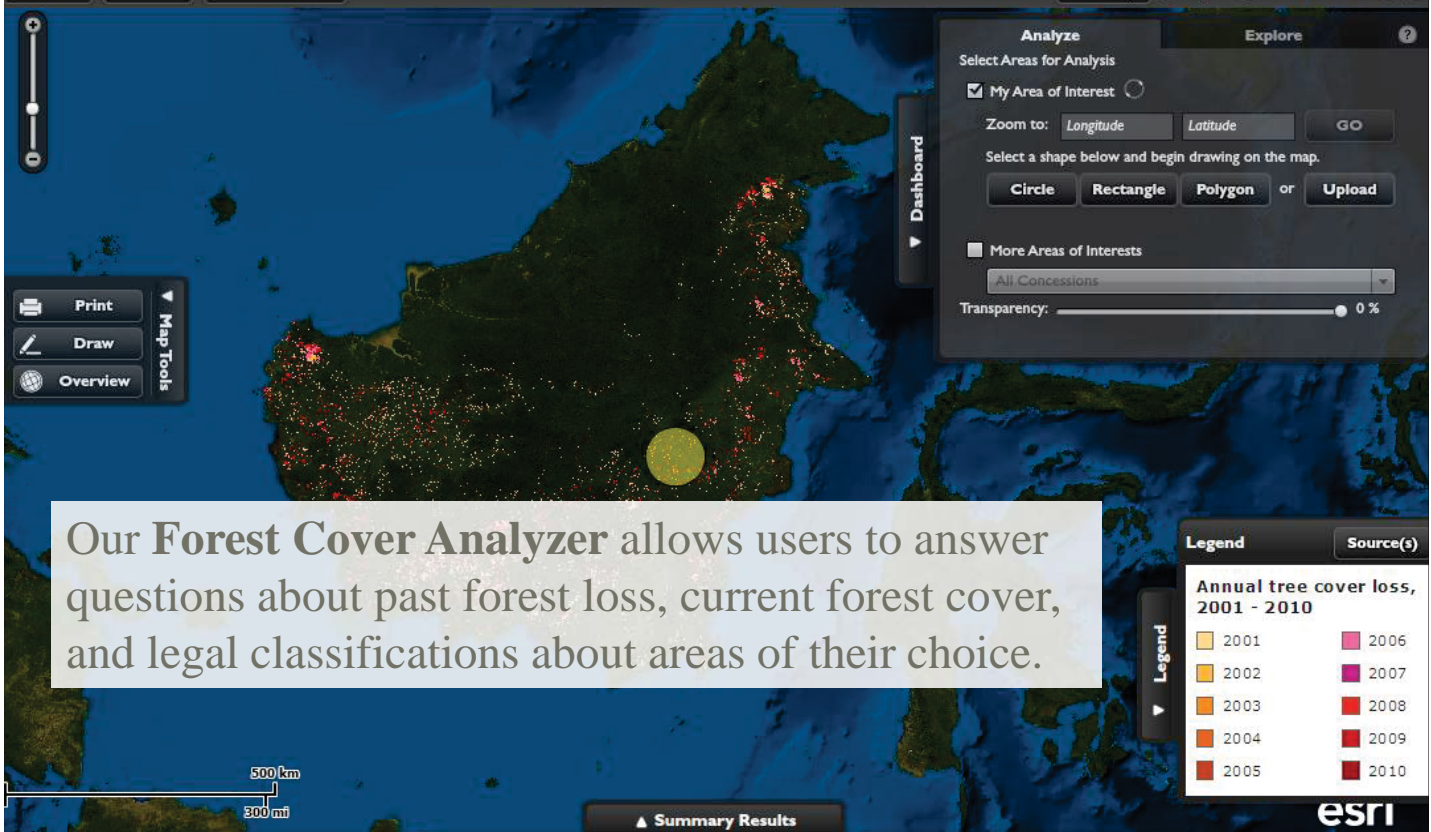
Forest Cover Analyzer

WORLD RESOURCES INSTITUTE



About Tutorial Download Data

Basemap English Bahasa Indonesia



Our Forest Cover Analyzer allows users to answer questions about past forest loss, current forest cover, and legal classifications about areas of their choice.

Legend		Source(s)
Annual tree cover loss, 2001 - 2010		
2001	2006	
2002	2007	
2003	2008	
2004	2009	
2005	2010	

Possible Uses: Forest Cover Analyzer

- Producers/Certification Bodies: Check risk that area has showed forest loss since November 2005; demonstrate maintenance of HCV set-asides
- Investors/Buyers/CBs: obtain concession information from clients/suppliers and check selected risks related to RSPO Criterion 7.3.
- RSPO: internal monitoring; helping companies identify risks
- NGOs: Monitoring, data sharing
- **Your ideas ?**